

Inter Entity Transactions

For Sage Accpac ERP



- ✓ Are you struggling to keep everything in balance?
- ✓ Do you run multiple entities, including branches, divisions, departments, funds, projects, trusts or companies within one or across Accpac databases?
- ✓ Increase the accuracy of your financial data.

What is Inter Entity Transactions?

Developed by Orchid Systems, Inter Entity Transactions facilitates doing business and transferring funds between entities. Entities can include branches, divisions, departments, funds, projects, trusts or multiple companies held within one or across Accpac databases.

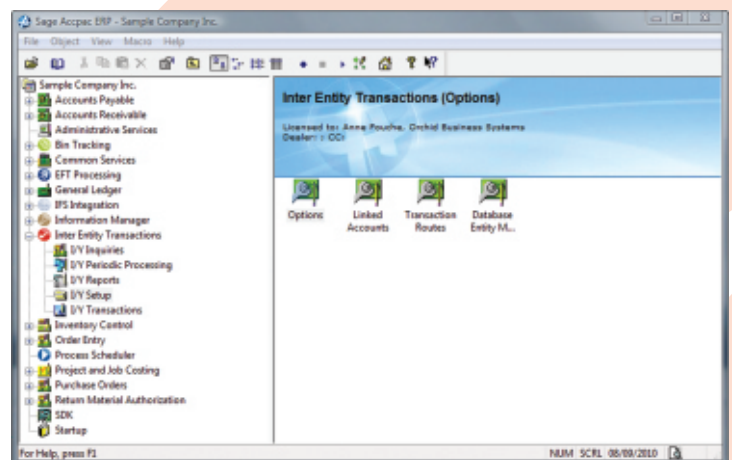
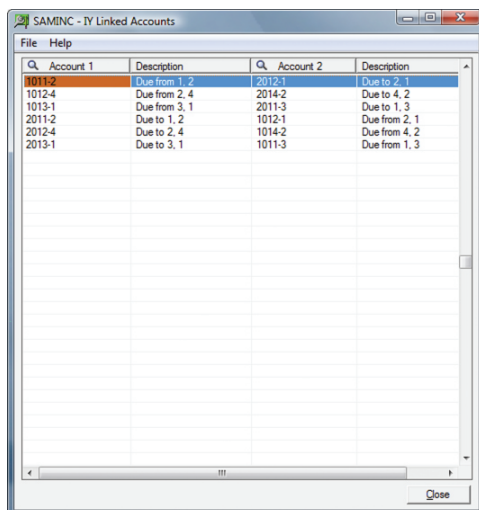
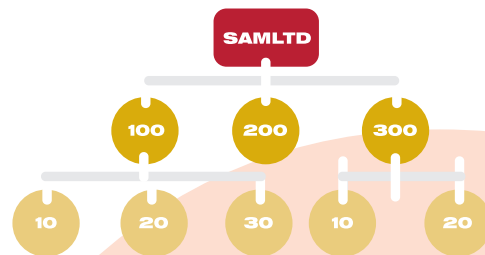
Inter Entity Transactions increases the accuracy of your financial data, streamlines business processes and provides tight control over transactions spanning multiple entities. The due to and due from transactions are automatically generated and complex routes can be followed when there are no direct inter entity account relationships between the transacting entities.

Detailed reports and processes ensure entities balance at all times, increasing the timeliness and accuracy of information whilst saving keystrokes! The Inter Entity Processing module will ensure that each entity stays in balance and will work on all General Ledger transactions regardless of whether they originated from any subsidiary ledger, the General Ledger, a third party module or an external system which has created General Ledger batches.

The module is well suited to non-profit organizations with Fund Accounting requirements and any organization with loan accounts which should mirror each other as a result of inter department, inter branch, inter divisional or inter company processing requirements within one or across Accpac Databases.

The Benefits of Inter Entity Transactions:

- Accuracy of financial data.
- Streamlines Business processes.
- Complex routes can be followed.
- Automatic due to and due from transactions.
- Keep each entity in balance.



Inter Entity Transactions

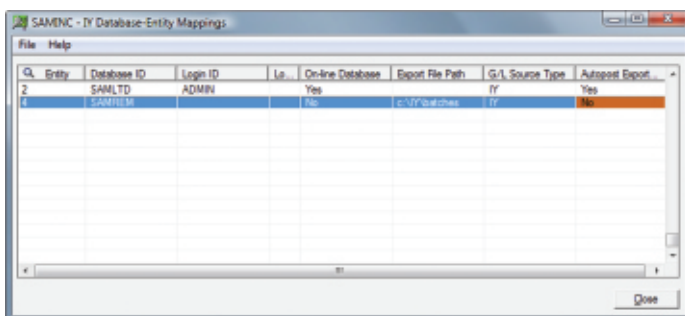
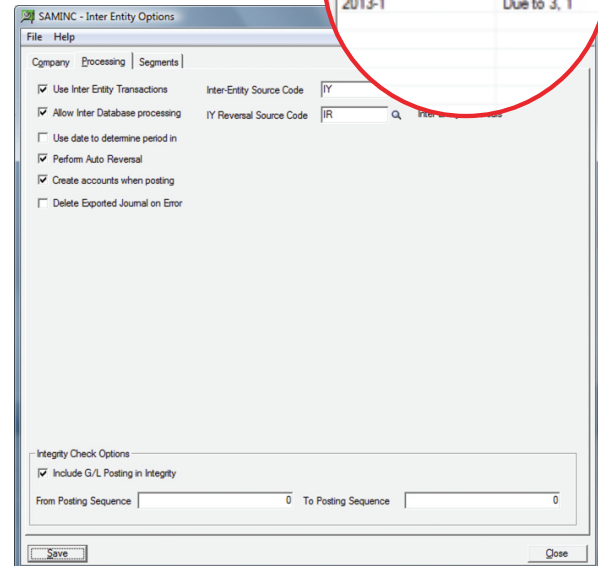
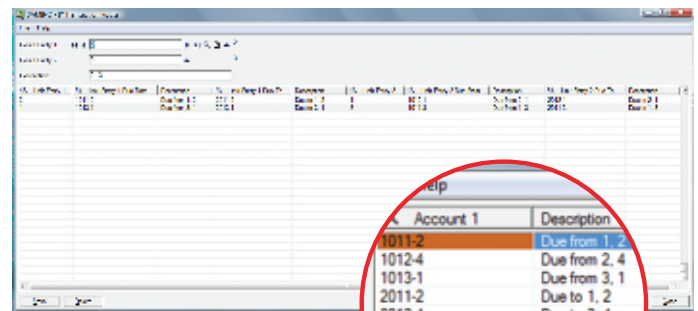
For Sage Accpac ERP



- ✔ Streamline business processes while saving keystrokes and time.
- ✔ Tighten control over transactions spanning multiple entities.
- ✔ Use Inter Entity Transactions to ensure your entities are always in balance.

Inter Entity Transactions Features:

- Post transactions based on date rather than fiscal period to support entities with different Period and Year Ends.
- Supports transactions between entities with different functional currencies.
- Supports standard Accpac functionality such as GL Auto Allocation and GL Reversing Entries.
- Works within one and/or across Accpac databases.
- Due to / due from transactions generated automatically.
- Works on all General Ledger transactions regardless of where they originated from.
- User definable routes, including complex routes across multiple entities.
- Developed in the Accpac SDK.
- Standard Accpac security, customization capabilities, import/export, data integrity checking and more!
- Reports can be customized through Crystal Reports®.
- Can be deployed in Client Server and Web Browser modes.
- Compatible with Sage Accpac ERP 100, 200 and 500.
- Runs on all databases supported by Accpac.
- Accpac look and feel.
- "Auto Reverse" entries destined for other companies.
- Generate batches for Import into remote "offline" company databases.
- Balance transactions at the segment level (rather than just the Account level) for one or more segments.
- Optionally set GL Accounts and GL Transactional Optional fields to be auto created in target databases.
- Optionally set batches in target databases to autopost.



"They (prospective Accpac Users) are also looking at a competing product, but their add on to do inter segment balancing is US \$4,500 plus two days of training from the developer.

I was able to setup a compelling demo in a couple of hours using the Orchid add on without any training from the developer... go figure! I thought the documentation was very good with nice examples..."

Accpac Solution Provider quote...

Minimum Requirements:

Inter Entity Transactions version 5.6 requires Sage Accpac ERP Version 5.6 System Manager and General Ledger

Copyright © 2010 Orchid Systems. All rights reserved.
All trademarks are registered trademarks or trademarks of their respective companies.

For further details contact your Sage Software Solution Provider...



2/273 Alfred Street, North Sydney, NSW, Australia, 2060
Tel: +61-2-9925-0383 / Fax: +61-2-9955-3926
www.orchidsystems.biz / info@orchidsystems.biz